

# AWD655-2 TABLE-TOP AND UNDERCOUNTER

~65 Lt.

Manual glass door table-top and undercounter machine for dental clinics and ward department.  
Large variety of baskets to wash and disinfect all kinds of surgical instruments, handpieces and accessories.

## AWD655-2



▶ Dimension (WxDxH mm) 595x540x600

## AWD655-2H



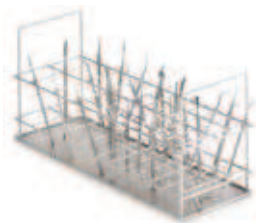
▶ Dimension (WxDxH mm) 595x540x850



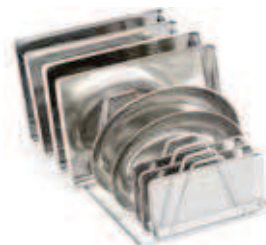
STANDARD BASKET



BASKET FOR 9 HANDPIECES



INSERT FOR VERTICAL INSTRUMENTS

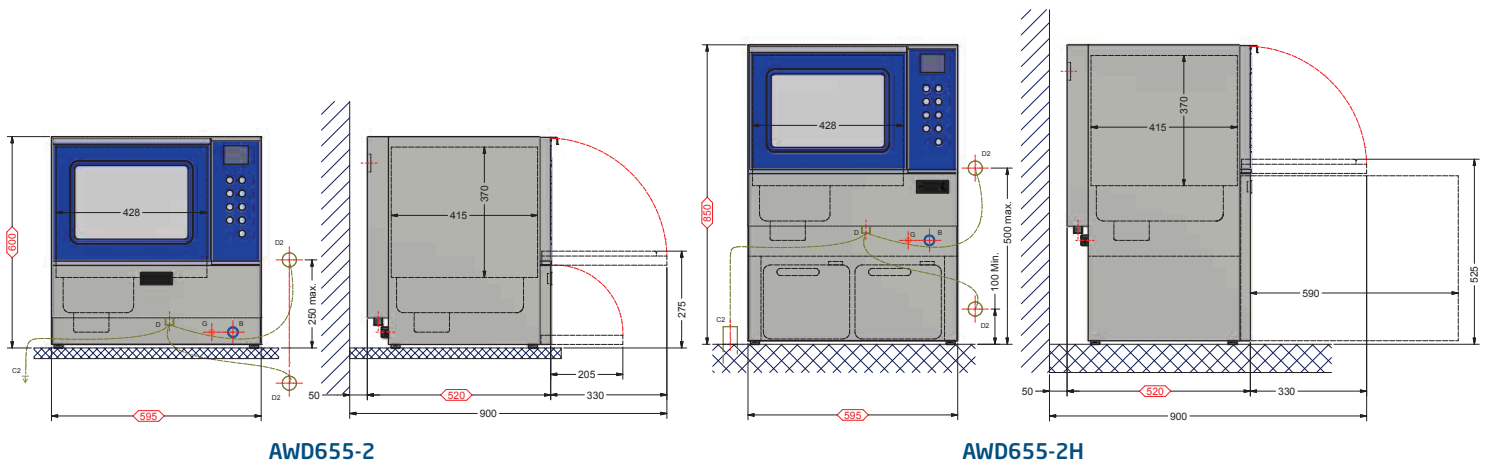


INSERT FOR TRAYS

# TECHNICAL FEATURES

• standard | + optional | / not available

TECHNICAL FEATURES	AWD655-2	AWD655-2H
External Lab. Certificate for validation of Type Test according to Norms EN ISO 15883-1/2	•	•
DVGW Certificate plumbing system, designed to isolate the potable water pipeline system (water gap) as prescribed by European Standard EN 1717	•	•
Manual door with interlock	•	•
Wash chamber made of high quality stainless steel, AISI 316L	•	•
Chamber wash pump flow rate	80 L/mn	80 L/mn
Drying fan flow rate with HEPA filter H13	50 m³/h	50 m³/h
Absorbed power	2,3 kW	2,3 kW
USB SLAVE interface for PC	2	2
USB HOST interface for FLASH DRIVE	2	2
RS232 Interface for external cycles documentation	2	2
Parallel Interface for printer	1	1
Touch panel with color graphic display	1	1
Dosing pumps for detergents (standard/optional) max 2 with flowmeters and sensors	1/2	1/2
Conductivity measurement	+	+
Chamber LED light	+	+
Demi connection	+	+
Detergent tank	1 L	5 L



A	HOT WATER CONNECTION-3/4"G (TUBE 1/2"G)	D2	DRAIN DN 40 - HOSE CONNECTION 25mm (AT WALL)	C2	DRAIN DN 40 - HOSE CONNECTION 25mm (AT WALL)
B	COLD WATER CONNECTION-3/4"G (TUBE 1/2"G)	G	ELECTRICAL CONNECTION		