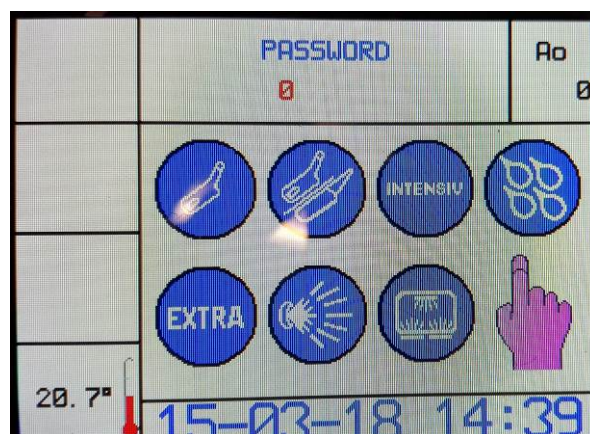
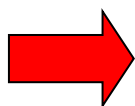
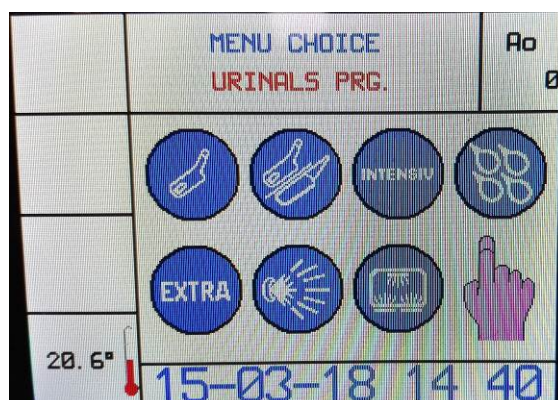
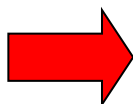


<b>PURPOSE OF INSTRUCTION</b>	CHANGE LANGUAGE ON THE TOUCH DISPLAY
<b>MODEL</b>	AF2 – P/C LINE
<b>WRITTEN BY</b>	M.ALBERTI
<b>ON</b>	15/03/2018

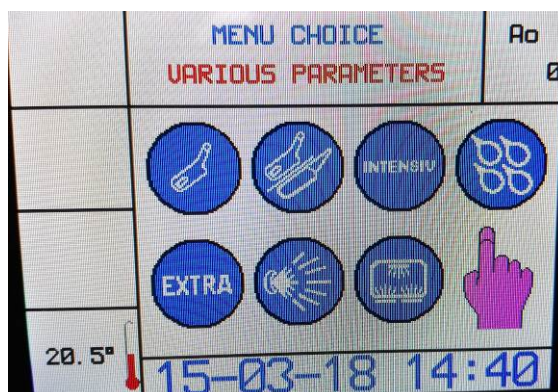
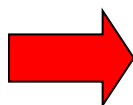
- 1) PRESS THE REAR BUTTON OF THE CAPACITIVE CARD TO ENTER THE PARAMETERS  
→ THE WRITING “PASSWORD” WILL APPEAR ON THE SCREEN**



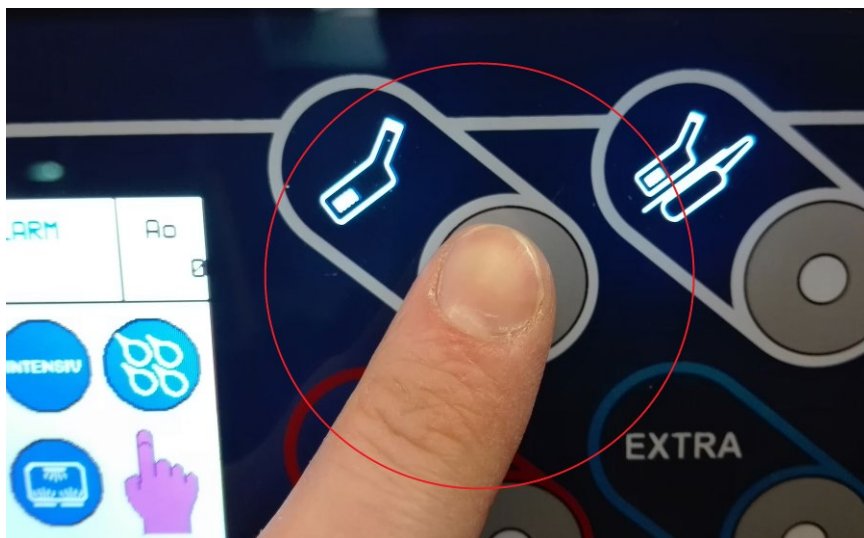
- 2) PRESS 4 TIMES THE KEY 1 (CYCLE URINE BOTTLES) → THE WRITING “MENU CHOICE” WILL APPEAR**



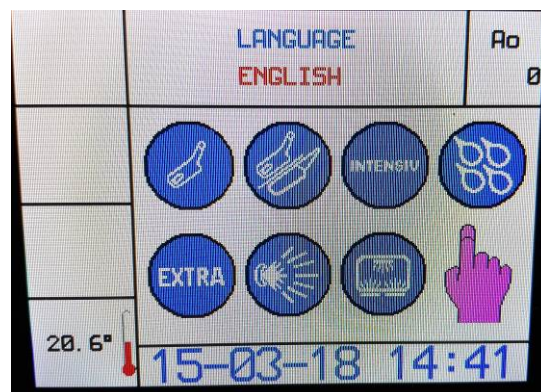
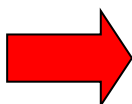
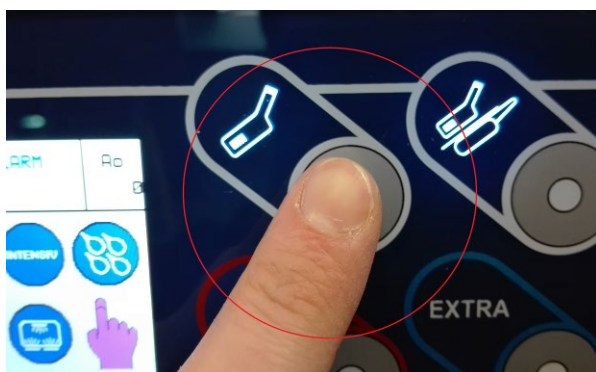
**3) PRESS THE KEY 3 (INTENSIVE CYCLE) → UNTIL THE WRITING “VARIOUS PARAMETERS” APPEARS**



**4) PRESS THE KEY 1 (CYCLE URINE BOTTLE) → TO ENTER THE VARIOUS PARAMETERS**

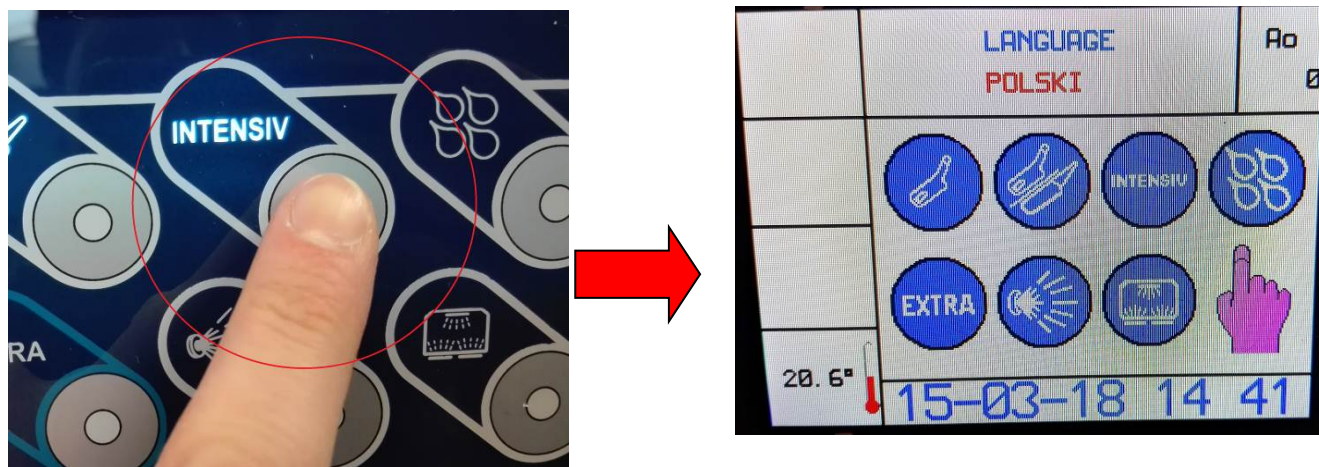


**5) PRESS THE KEY 1 (CYCLE P URINE BOTTLE) → UNTIL THE REACHING OF THE WRITING “LANGUAGE”**

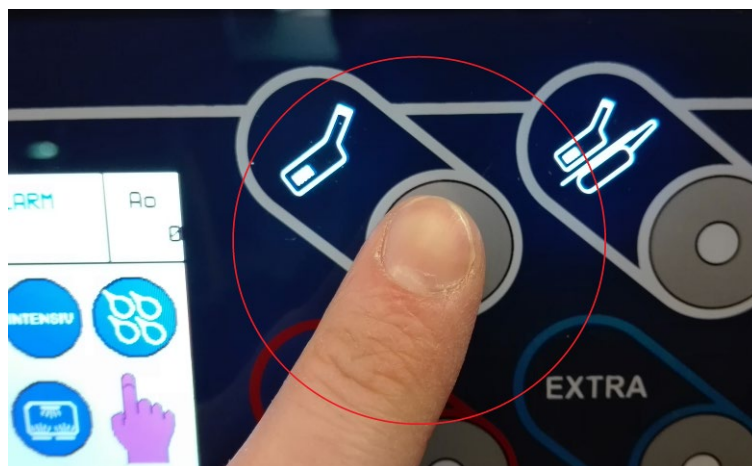




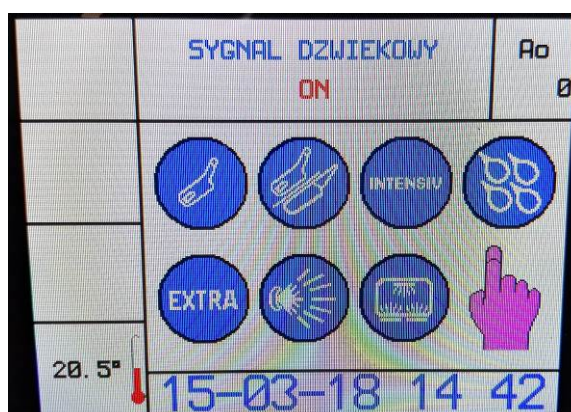
**6) PRESS THE KEY 3 (INTENSIVE CYCLE)→ UP TO THE DESIRED LANGUAGE**



**7) ONCE THE DESIRED LANGUAGE HAS BEEN REACHED, PRESS THE KEY 1 (CYCLE URINE BOTTLE)→ TO EXIT FROM BELOW MENU**



**THE WRITING BUZZER ON WILL APPEAR**



**8) PRESS THE RESET KEY 2 TIMES → UNTIL THE EXIT FROM ALL MENU TO GET TO THE PROGRAM SELECTION SCREEN**



**9) THE LANGUAGE HAS BEEN INSTALLED CORRECTLY**

