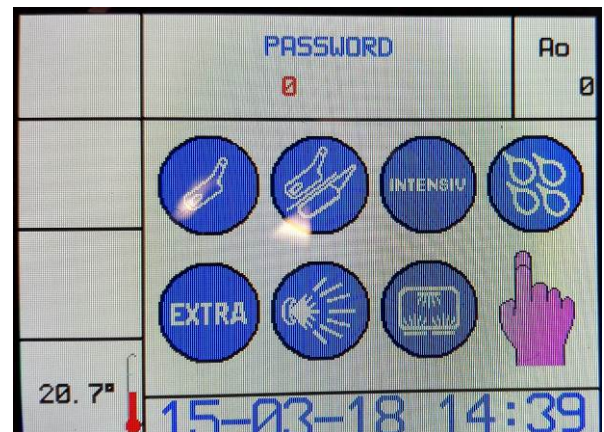
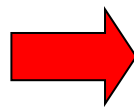
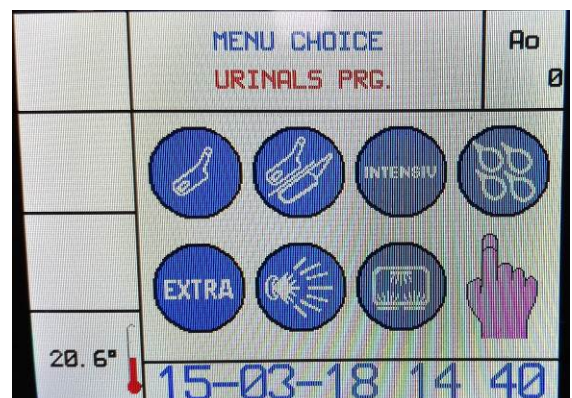
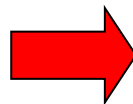


PURPOSE OF INSTRUCTION	CHANGE DATE/HOUR ON THE TOUCH DISPLAY
MODEL	AF2 – P/C LINE
WRITTEN BY	MICHELE SANDRI
ON	29/04/2020

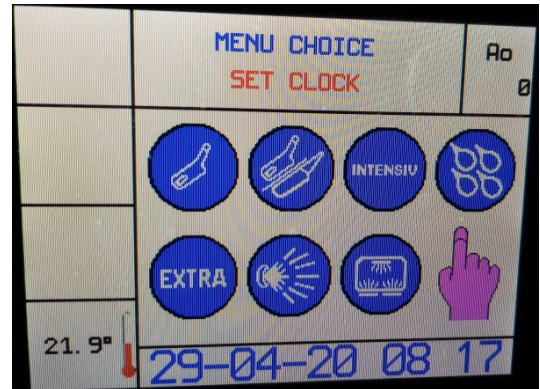
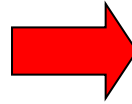
- 1) PRESS THE REAR BUTTON OF THE CAPACITIVE CARD TO ENTER THE PARAMETERS
 → THE WRITING “PASSWORD” WILL APPEAR ON THE SCREEN



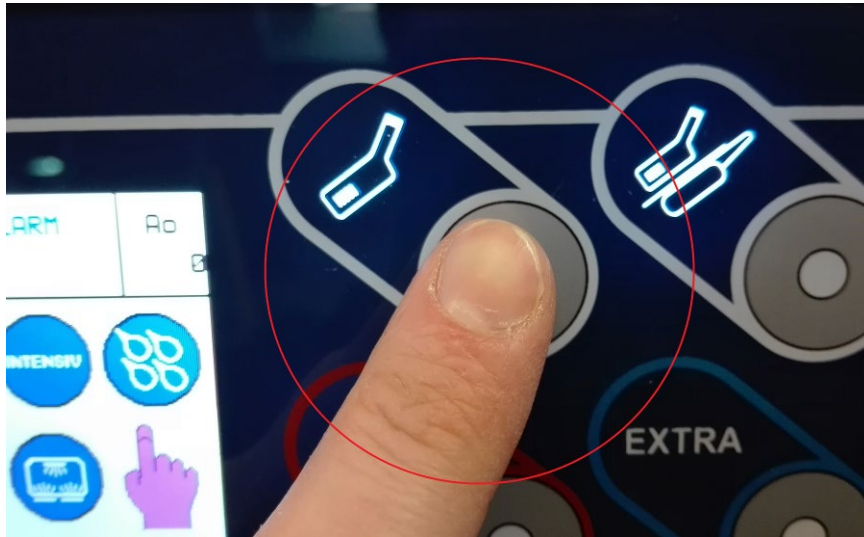
- 2) PRESS 4 TIMES THE KEY 1 (CYCLE URINE BOTTLES) → THE WRITING “MENU CHOICE” WILL APPEAR



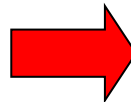
3) PRESS THE KEY 3 (INTENSIVE CYCLE) → UNTIL THE WRITING “SET CLOCK” APPEARS



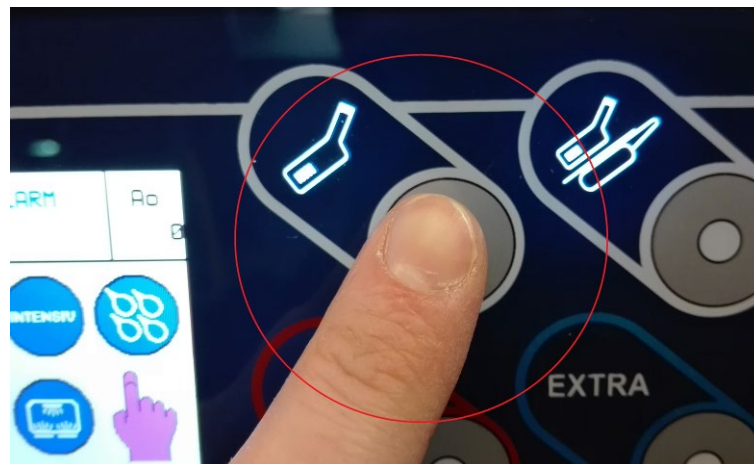
4) PRESS THE KEY 1 (CYCLE URINE BOTTLE) → TO ENTER THE CLOCK SETTING



5) USE THE KEYS 3 (INTENSIVE CYCLE) AND 4 (SLOPSINK) → MODIFY THE DATE AND HOUR



6) ONCE THE DESIRED LANGUAGE HAS BEEN REACHED, PRESS THE KEY 1 (CYCLE URINE BOTTLE) → TO EXIT FROM BELOW MENU



7) PRESS THE RESET KEY 2 TIMES → UNTIL THE EXIT FROM ALL MENU TO GET TO THE PROGRAM SELECTION SCREEN



8) THE DATE/HOUR HAS BEEN INSTALLED CORRECTLY

