

COMPONENTS DISASSEMBLY SEQUENCE SERIES 4060



TABLE OF CONTENTS

Symbols used in the disassembly procedure.....	3
Tools used	4
Screws used	5
Front panel, lock, display board disassembly.....	6
Main electronic circuit board disassembly.....	10
Motor disassembly.....	13
Upper spray arm delivery tube disassembly.....	18
Transducer disassembly.....	23
Air trap disassembly.....	25

Symbols used in the procedure

Symbols used in the disassembly procedure.

OPERATION TO MAKE WITH SPECIAL CARE	
SOME STEPS OF THE PROCEDURE REQUIRE THE PRESENCE OF 2 PERSONS	
OPERATION TO BE CARRIED OUT WITH THE HELP OF SUITABLE GLOVES	



Caution! maintenance and any repairs must be performed by Smeg authorized service technician!

Warning! For any replacement an original Smeg spare part must be used.

TOOLS USED



TOOL No. 1 Phillips slotted screwdriver



TOOL No. 2 Long nose pliers



TOOL No. 3 13mm Open-ended spanner



TOOL No. 4 Box spanner 7mm



TOOL NO. 5 ELECTRIC IMPACT WRENCH
AND/OR SCREWDRIVER WITH INSERT FOR
CROSS-HEAD SCREW



TOOL No. 6 flat-blade screwdriver



TOOL No. 7 Box spanner 6mm



LIQUIDS VACUUM
CLEANER



PROTECTIVE GLOVES
+ LATEX GLOVES

SCREWS USED

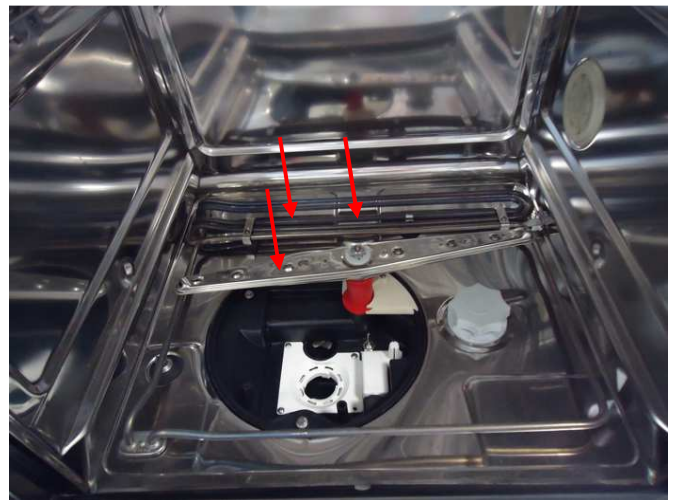


Caution! the machine requires different screws which must not be mixed!

Screws with knurled head : for fastening components on the back of the machine :



Screws with smooth head (steel): for fastening the front components, inside the machine



DISASSEMBLY:

- 1) **FRONT PANEL,**
- 2) **DOOR LOCK**
- 2) **DISPLAY ELECTRONIC BOARD**

Tools required in this disassembly procedure



TOOL No. 1 Phillips slotted screwdriver



Before any maintenance and repair of the equipment, electrically disconnect the machine.

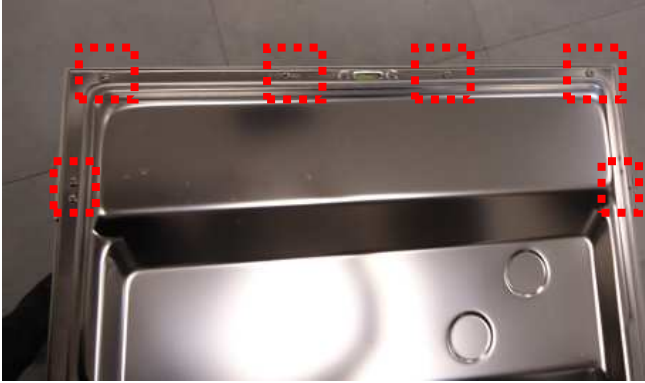

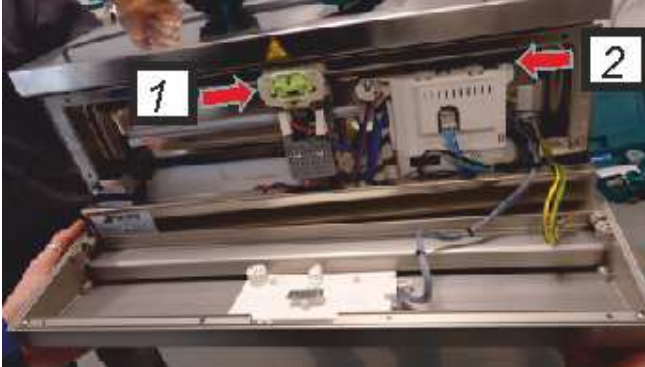

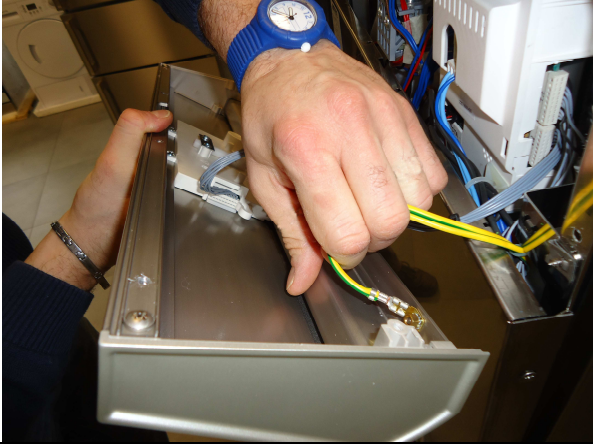


MACHINE FULL VIEW



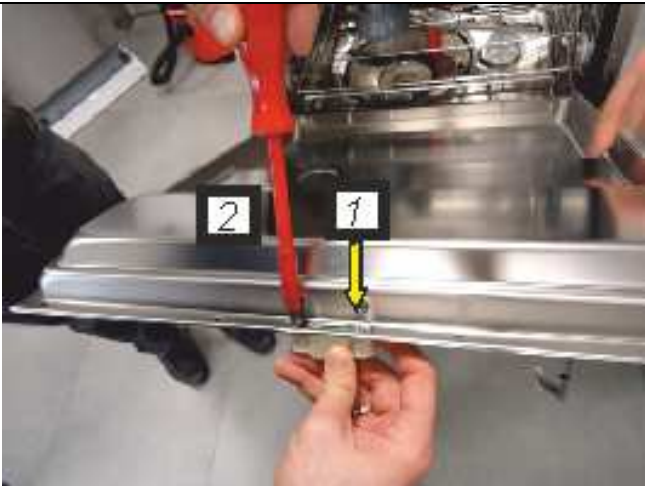
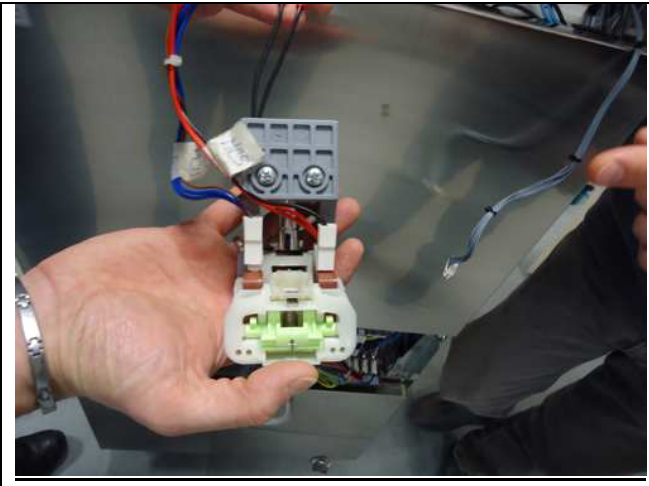
1. Open the door of the appliance.

1-front panel disassembly

	
<p>1. Remove the 6 screws that secure the front panel to the door (tool no.1)</p>	<p>2.Now it is possible to remove the front panel paying attention to the electrical connections.</p>
	
<p>3. View of components inside the front panel. 1.Lock 2.Main electronic board</p>	<p>4.Disconnect the cable that electrically connects the display board.</p>
	<p>FRONT PANEL REMOVAL OPERATION COMPLETED.</p>
<p>5. Disconnect the earth wire. Now it is possible to completely remove the front panel.</p>	



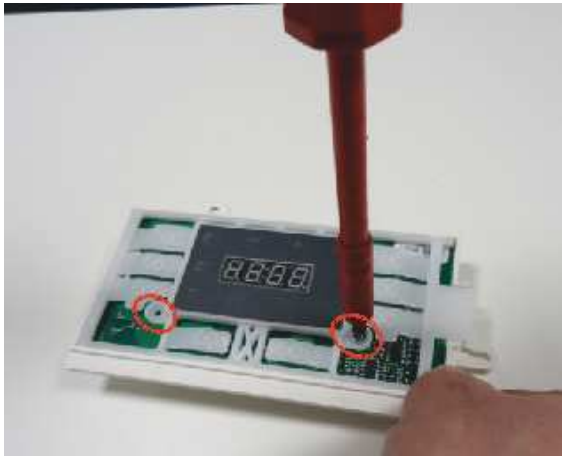
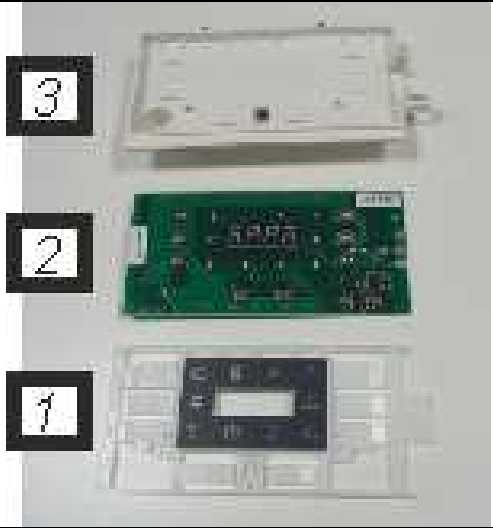
2-door lock disassembly

After removing the front panel, according to the above procedure, continue disassembling the door lock.

	
<p>1.Remove the two screws that secure the lock to the door (tool n.1)</p>	<p>DETAIL OF LOCK REMOVED</p>

3-display board disassembly

After removing the front panel, according to the above procedure, continue disassembling the display board.

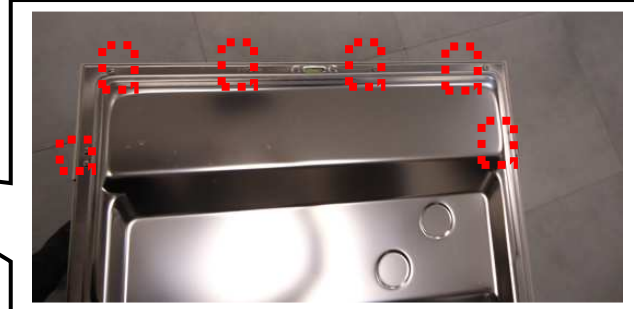
	
<p>1. Remove the two screws that secure the display board unit to the front panel (tool no. 1)</p>	<p>2. Now it is possible to remove the display board unit.</p>
	
<p>3. Remove the two screws that secure the buttons and the silkscreen to the board and to the related support (tool no. 1)</p>	<p>DETAIL: 1=BUTTONS AND SILKSCREEN 2=DISPLAY BOARD 3=DISPLAY BOARD GUARD</p>

MAIN ELECTRONIC BOARD DISASSEMBLY

Tools required in this disassembly procedure



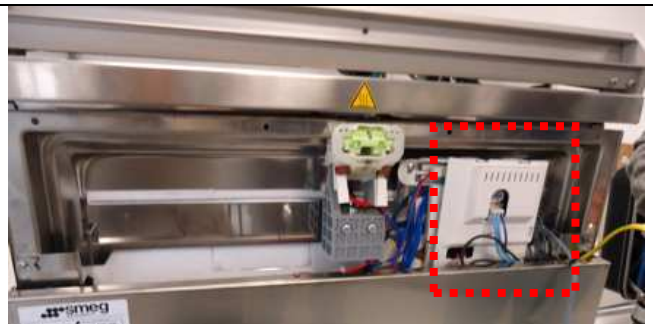
TOOL No. 1 Phillips slotted screwdriver



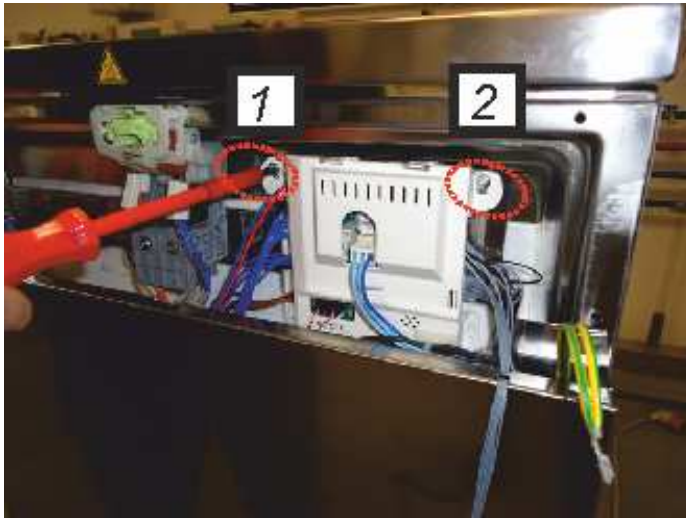
1. Open the door and remove the 6 screws that secure the front panel (tool no. 1).



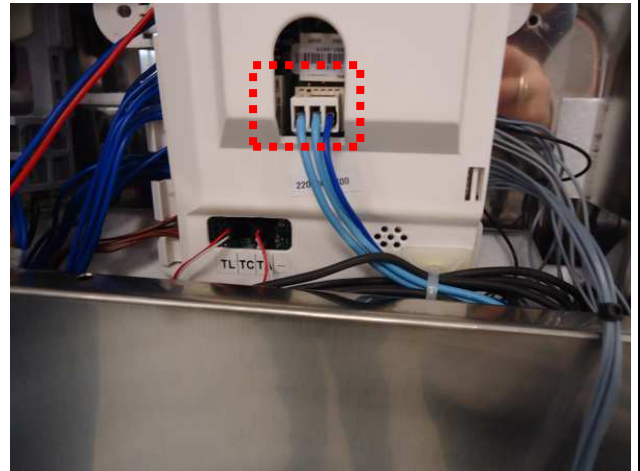
2. Now it is possible to remove the front panel paying attention to the electrical connections.



3. Detail of the main electronic board.



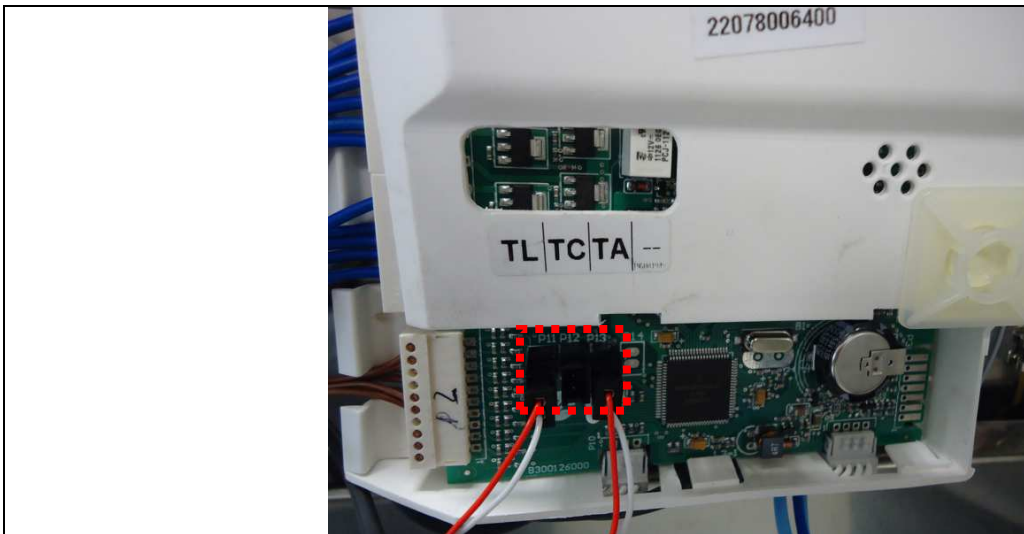
4. Remove the two screws that secure the shell + electronic board (tool no.1)



5. Disconnect the electronic board power supply cable.



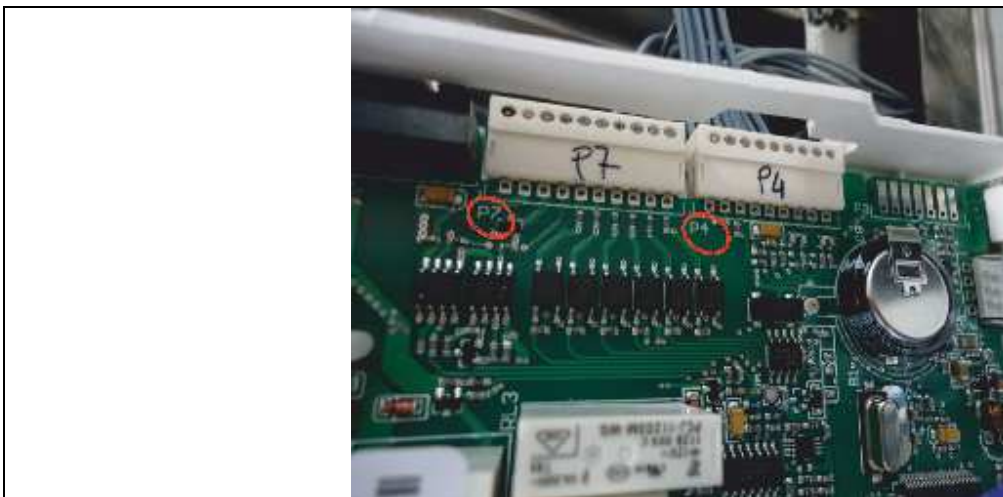
6. Now it is possible to remove the electronic board from its housing.



Warning! before disconnecting the probe connectors, identify them according to the indications (TL/TC/TA)!



Be careful when re-connecting the TL/TC/TA connectors (respectively: washing temperature/control temperature/drying temperature) as silkscreen printed on the board!



Warning! for proper connection of the connectors, match the silkscreen printing both on the electronic board and on the connector to be connected

WASHING MOTOR DISASSEMBLY

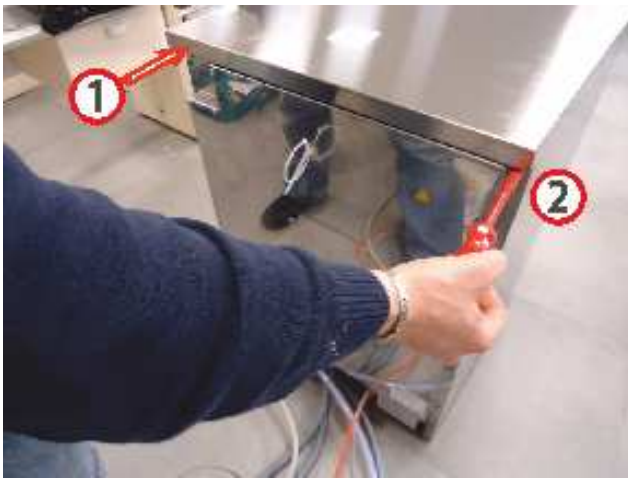
Tools required in this disassembly procedure



TOOL No. 1 Phillips slotted screwdriver



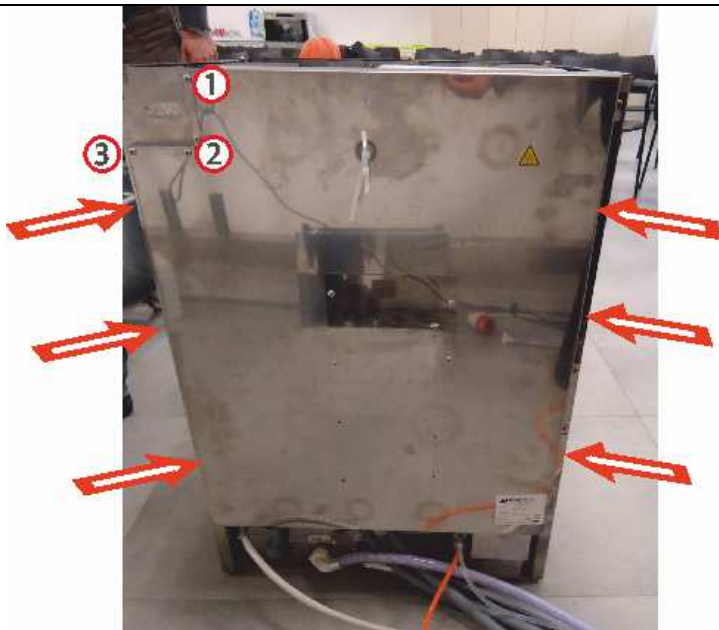
TOOL No. 2 Long nose pliers



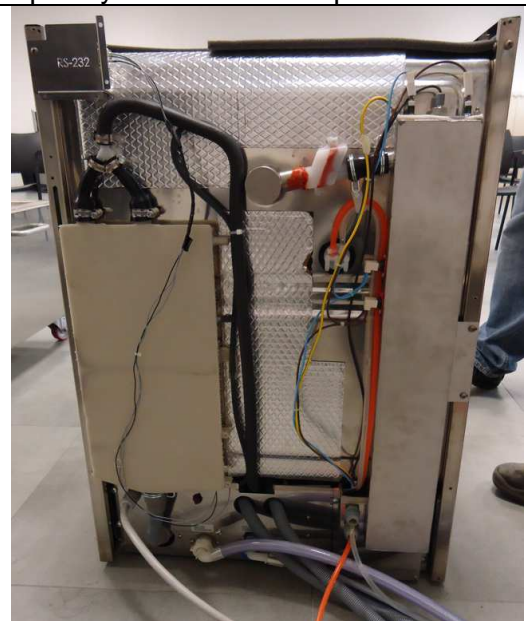
1- Remove the top secured by two screws on the rear side of the machine (tool no. 1).



2. Now pressing with the hand on the front top (1), push towards the back of the machine lifting it (2), to completely remove the component.



3. Remove the 6 lateral screws and the 3 screws on the upper left corner that secure the rear panel of the machine.

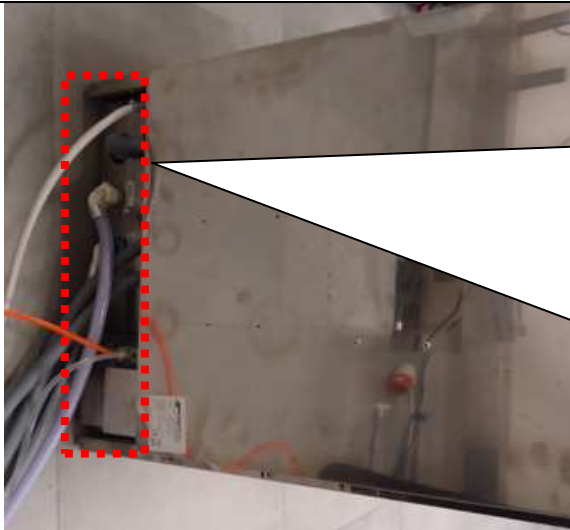


VIEW OF COMPONENTS ATTACHED ON THE BACK OF THE APPLIANCE.

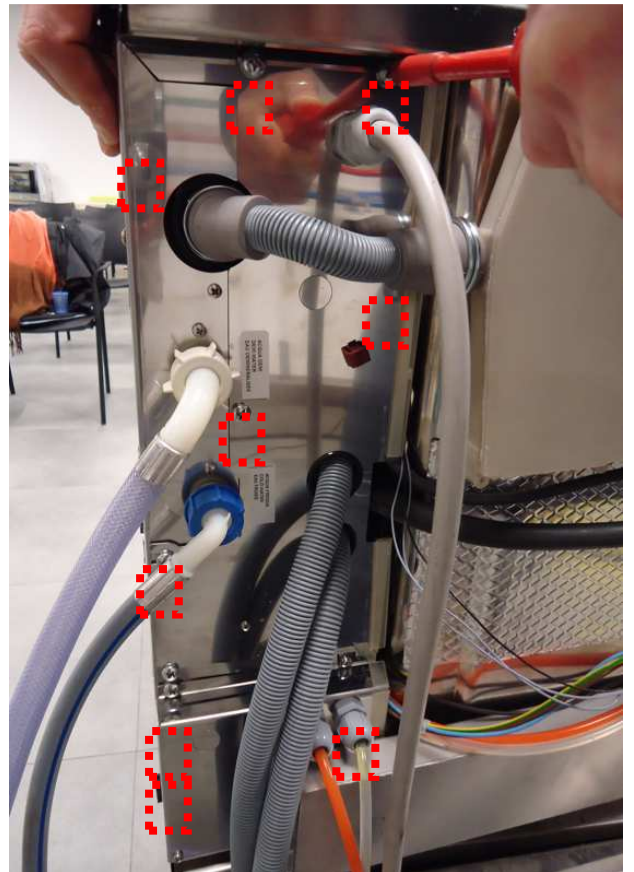


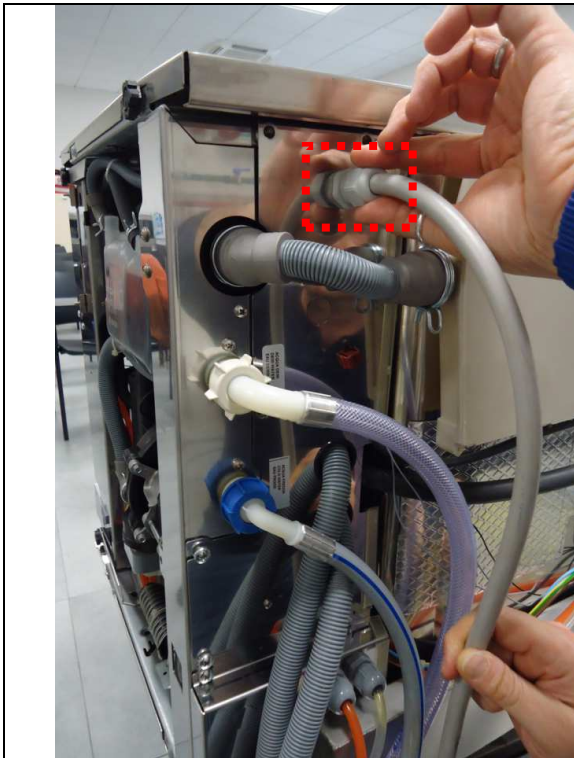
4. Front view, place the machine on its left side, taking care not to damage it.

APPLIANCE REAR SIDE

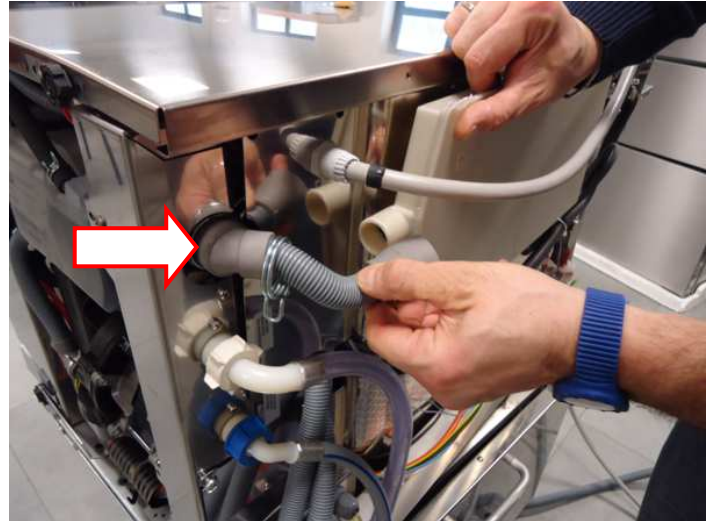


5. Now operate on the rear side of the machine. Remove the screws indicated to disassemble the low crossbar.

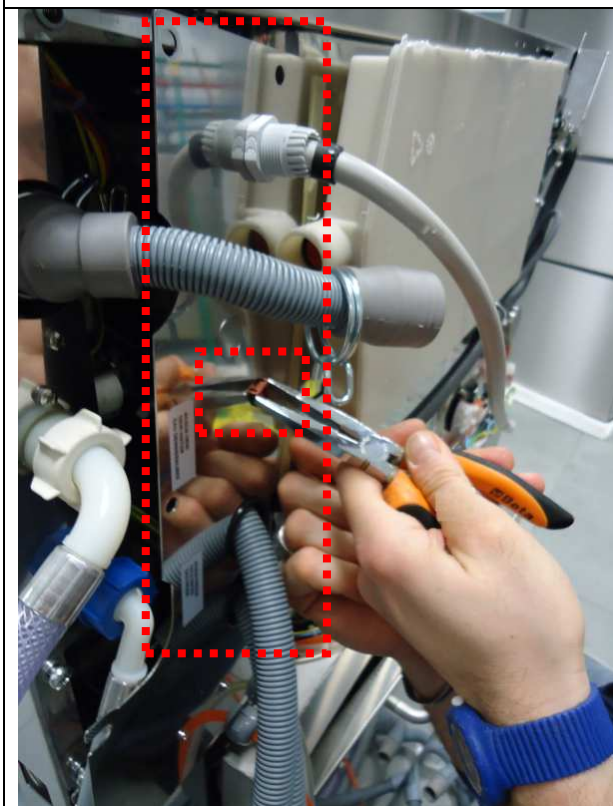




6. Loosen the cable gland of the power cord.




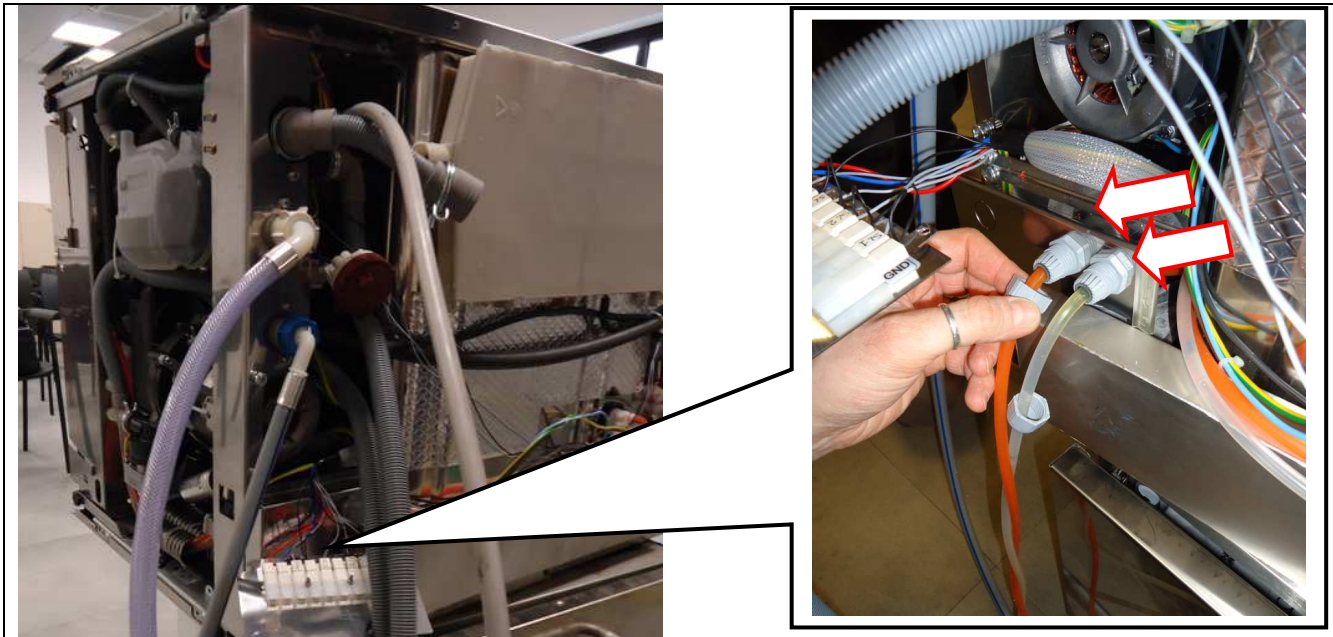
7. Disconnect the capacitor drain tube.



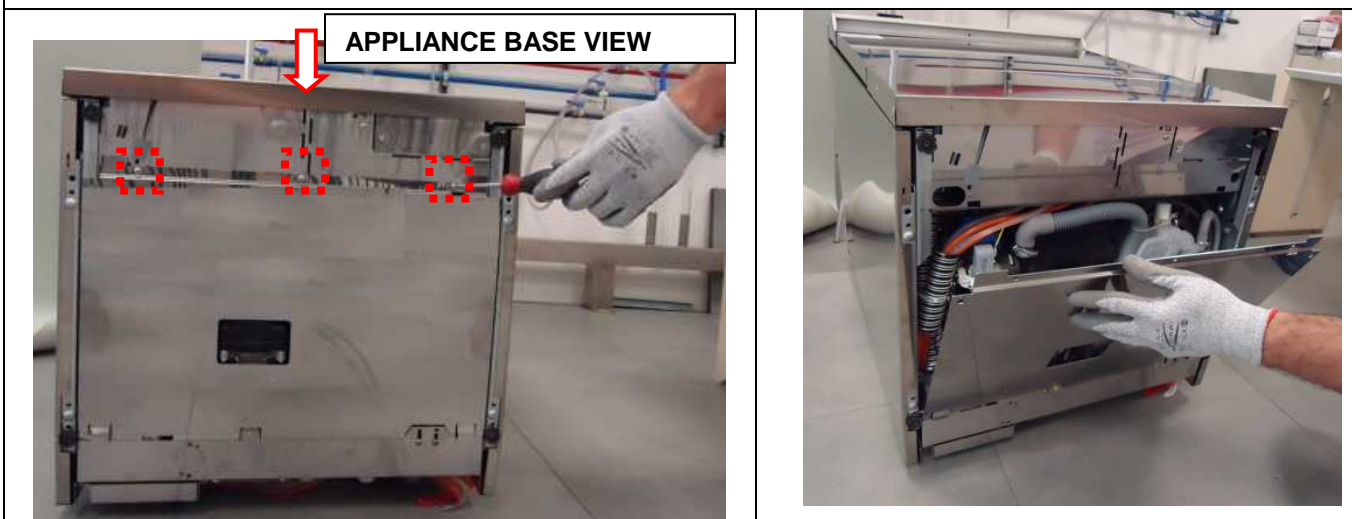
8. Release the pressure switch from the lower rear crossbar. (Tool no. 2).

Now it is possible to completely remove the lower

crossbar. 



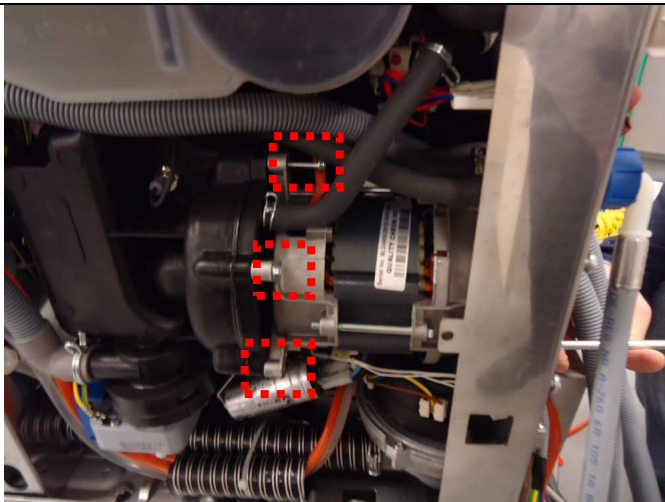
10. Disconnect the tubes shown.



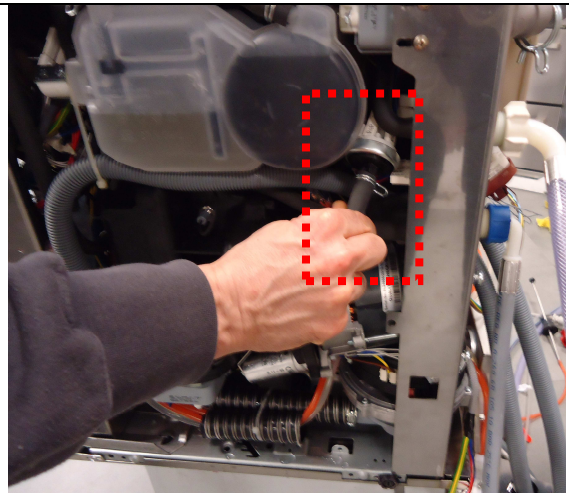
11. Now operate from the base of the dishwasher.

Remove the 3 screws that secure the base protection of the appliance. (tool no.1)

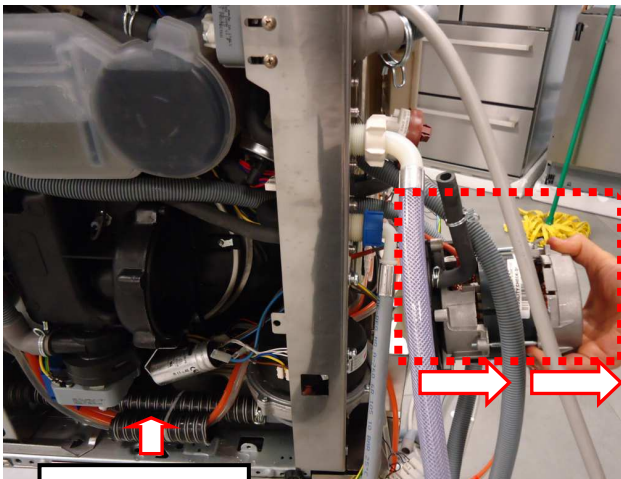
12. Remove the base protection forward, to remove it completely.



13. Using tool no. 7, remove the 6 screws that secure the washing motor to the related support bracket.



14. Disconnect the pressure switch connecting tube and the electrical connections.



Dishwasher
bottom



15. Remove the motor from the housing.

MOTOR REMOVED

UPPER ARM SPRAYER DELIVERY TUBE DISASSEMBLY

Tools required in this disassembly procedure



TOOL No. 1 Phillips slotted screwdriver



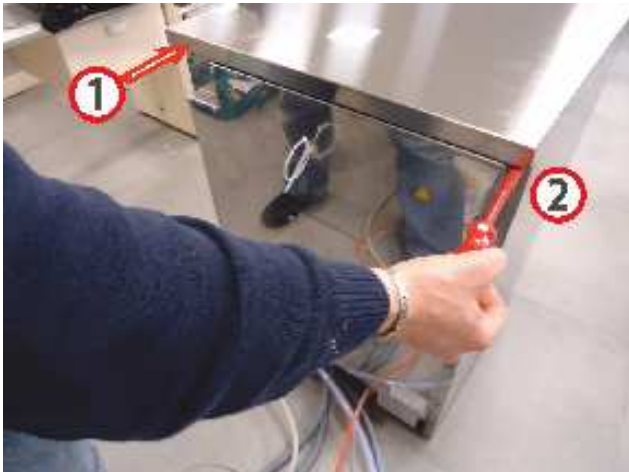
TOOL No. 2 Long nose pliers



TOOL No. 3 13mm Open-ended spanner



TOOL No. 6 flat-blade screwdriver



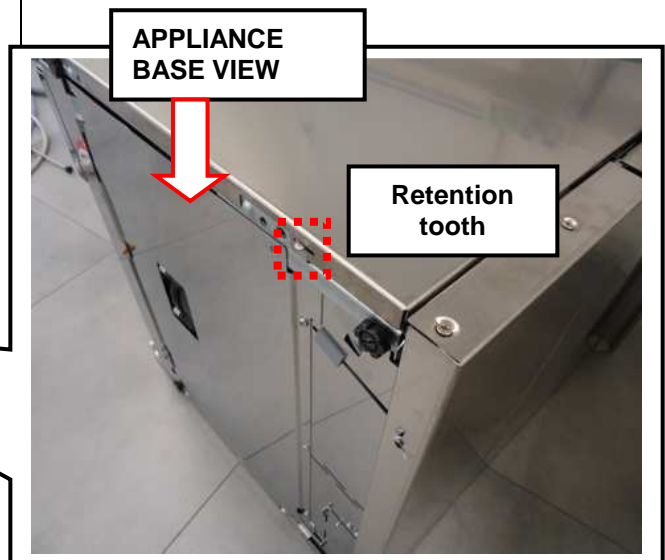
1- Remove the top, secured by means of two screws on the rear side of the machine (tool no. 1).



2. Now pressing with the hand on the front top (1), push towards the back of the machine lifting it (2), to completely remove the component.

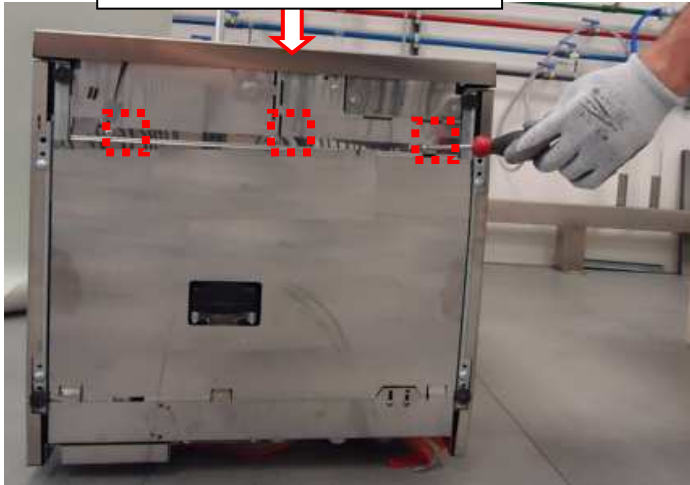


3.Remove the 3 front screws that secure the left side (tool no.1).



4.Using tool no. 6, press on the retention tooth that secures the side of the machine, in order to access the lateral components.

APPLIANCE BASE VIEW



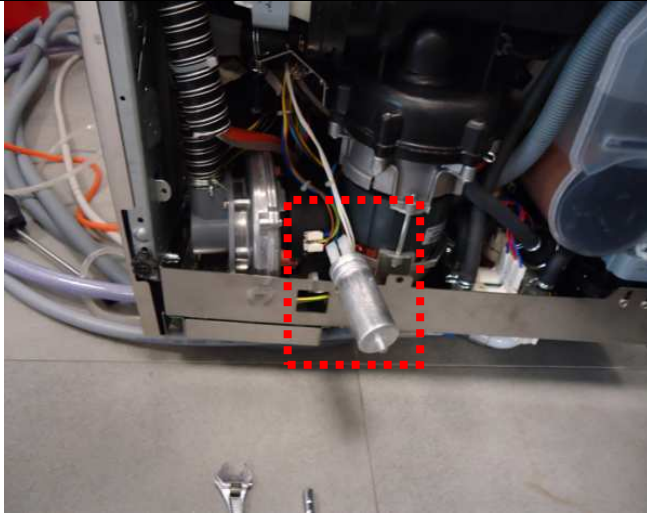
5. Place the unit on its back, taking care not to damage it.

Remove the 3 screws that secure the base protection of the appliance. (tool no.1)

6. Remove the base protection forward, to remove it completely.



7. Remove the capacitor (tool no. 3).



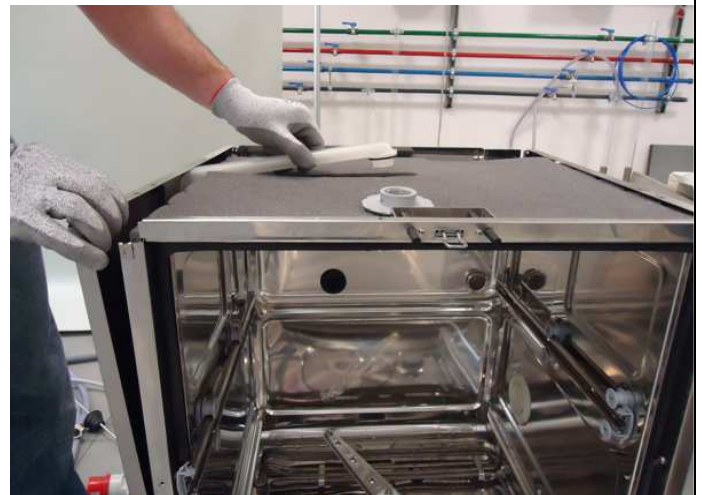
8. Remove the electrical connections to completely release the capacitor.



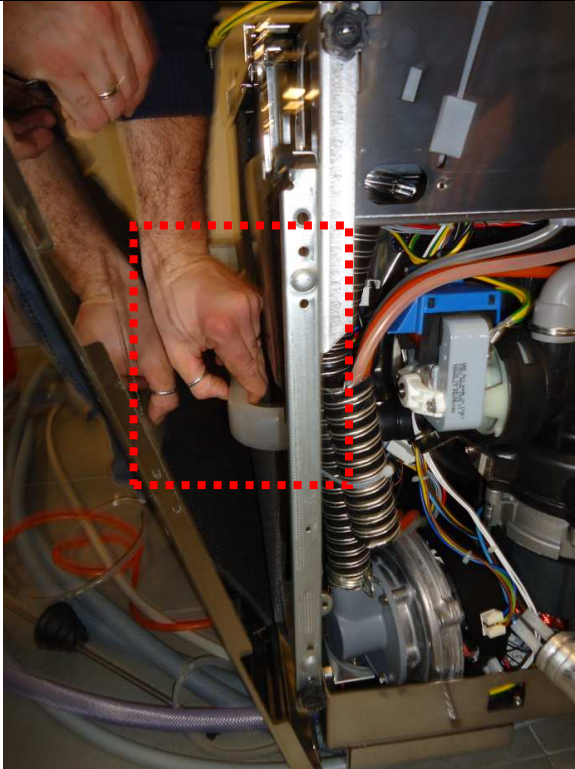
9. Remove the clamp that fastens the upper spray arm delivery tube.



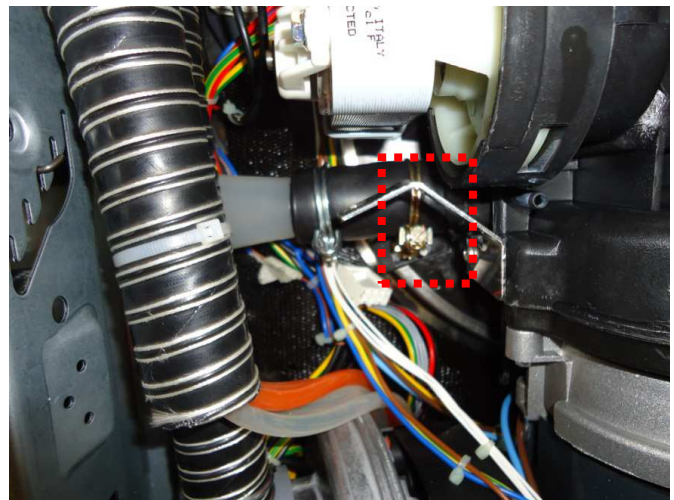
10. Open the dishwasher door and remove the upper spray arm



11. Now it is possible to remove the duct from the top of the appliance and



12.....by slightly moving the left side (front view) completely remove the component.



*Warning! the tightening of the clamp that secures the spray arms duct, must **not** be positioned at the stroke end!*

TRANSDUCER DISASSEMBLY

Tools required in this disassembly procedure



TOOL No. 1 Phillips slotted screwdriver



TOOL No. 2 Long nose pliers




GLOVES



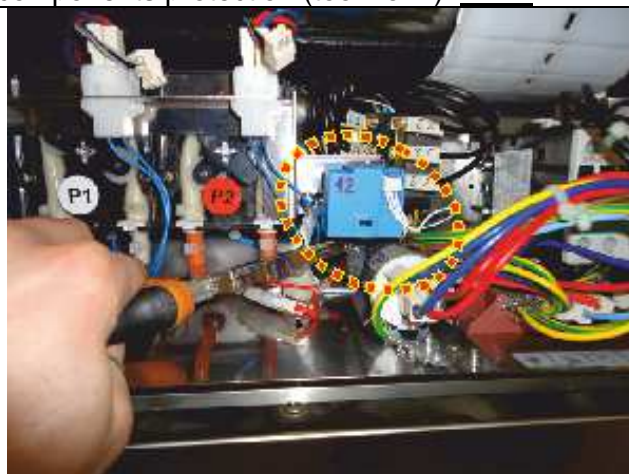
1- Remove the skirting board.



2 Remove the two screws that secure the components protection (tool no. 1) 

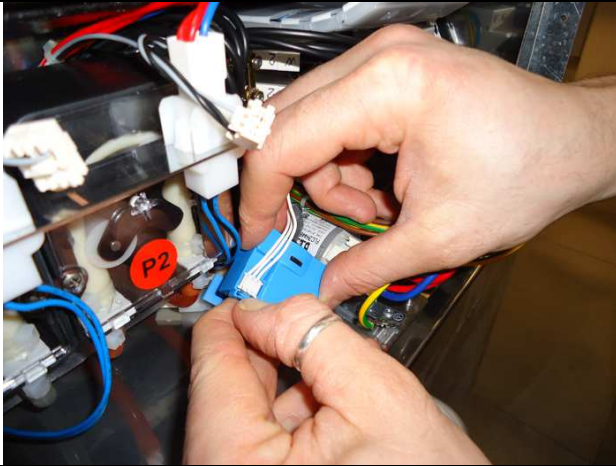


3. Slip the protection downwards and rotate it slightly forward to remove it completely from the

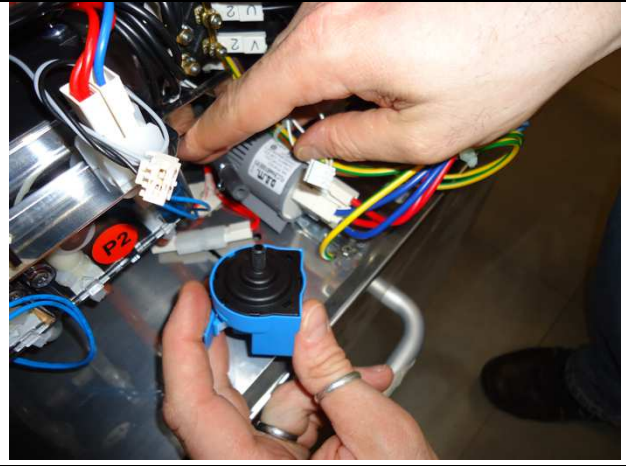


4. Remove the clamp that secures the transducer tube (tool no. 2)

housing.




5.Remove the connector for electrical connection.






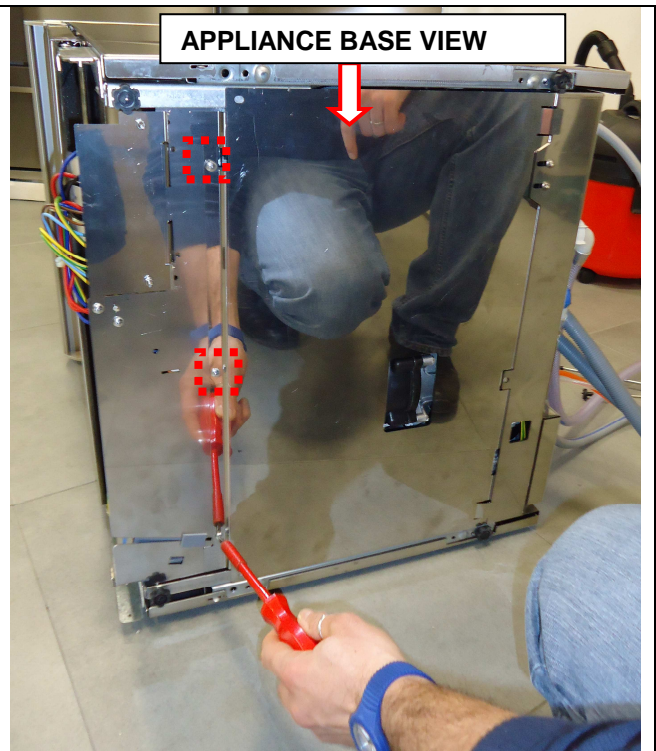
6.Now it is possible to fully release the component from it housing.

AIR TRAP DISASSEMBLY

Tools required in this disassembly procedure

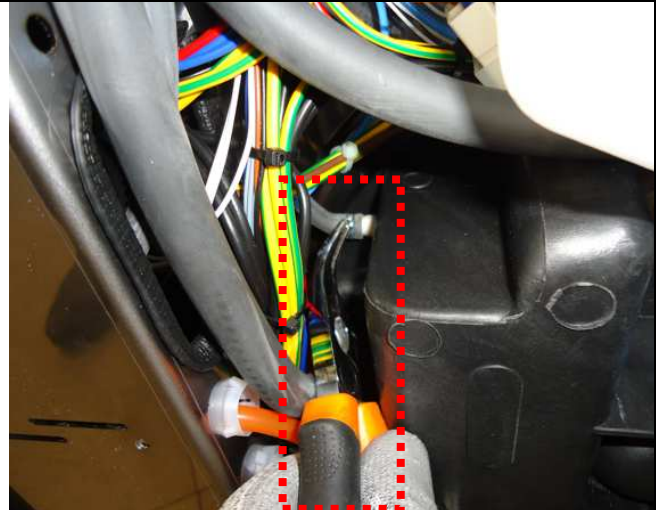
	
<p>TOOL No. 1 Phillips slotted screwdriver</p>	<p>TOOL No. 2 Long nose pliers</p>

	
<p>1- Remove the skirting board.</p>	<p>2 Remove the two screws that secure the components protection (tool no. 1) </p>



3. Front view. Place the machine on the left side, taking care not to damage the appliance.

4. Remove the 3 screws that secure the base protection of the appliance (tool no. 1).



5. Remove the base protection forward, to remove it completely.

6. Disconnect the tube that connects the air trap by removing the clamp (tool no. 2).



7. Set the machine upright and remove the lower



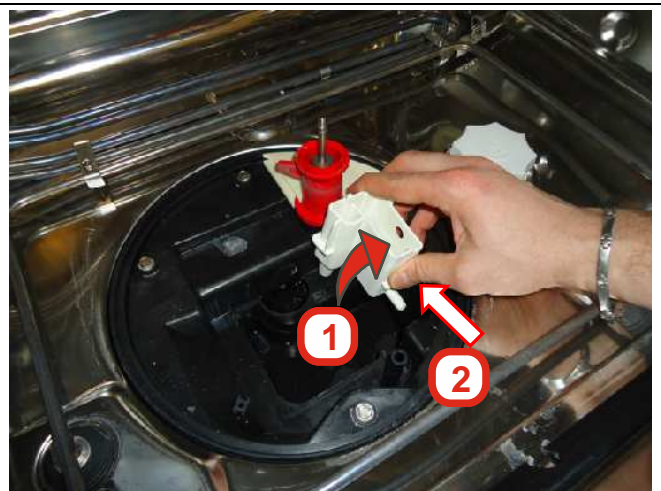
spray arm.







8. Remove the filter by turning it counterclockwise.



9. Remove the drain compartment cover secured by means of 4 screws (tool no. 1).



10. Grasp the air trap, rotate clockwise (1) and then push the component (2) towards the machine back to remove it completely from the seat.

 <p>gasket</p>	
<p> WARNING! every time the air trap is changed, it is recommended to replace also the black gasket!</p>	<p> Warning! after assembling the new air trap spare part, put back the clamp that secures the tube to the air trap as before, to prevent any leaks!</p>